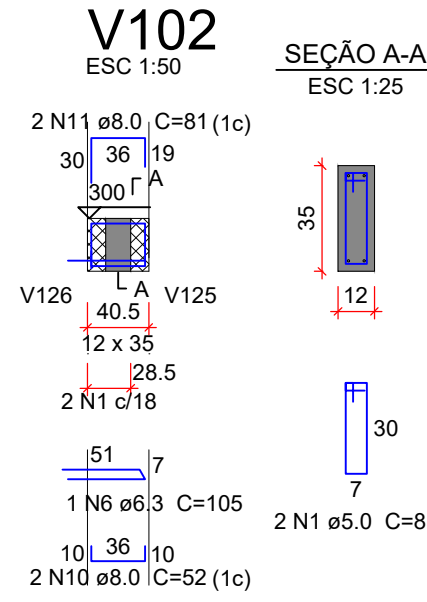
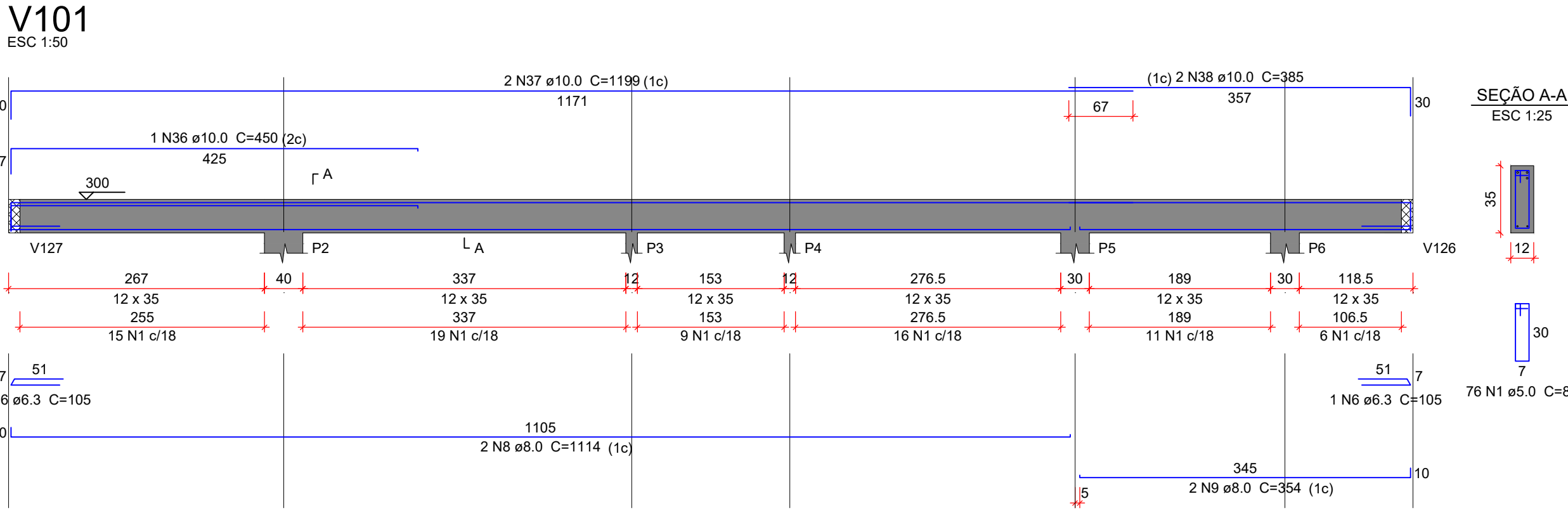


VIGAS NÍVEL +3.00m Fck = 25MPa



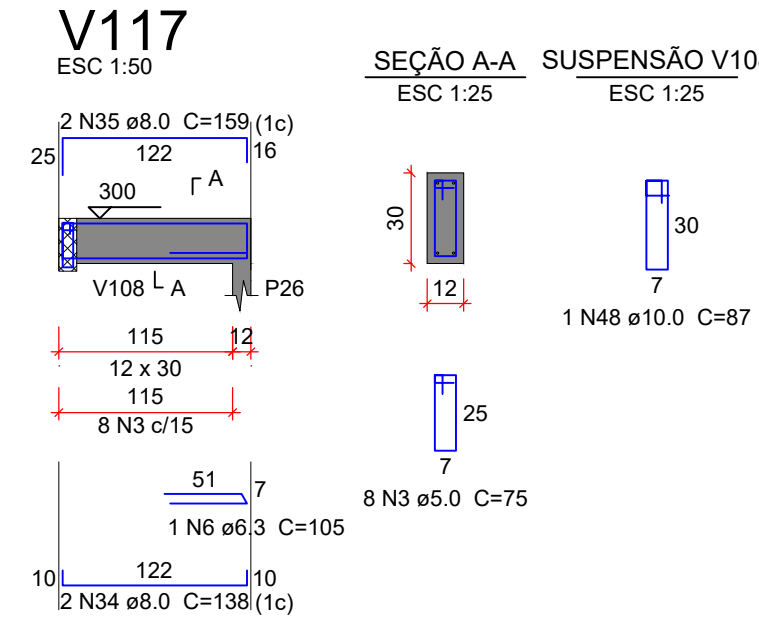
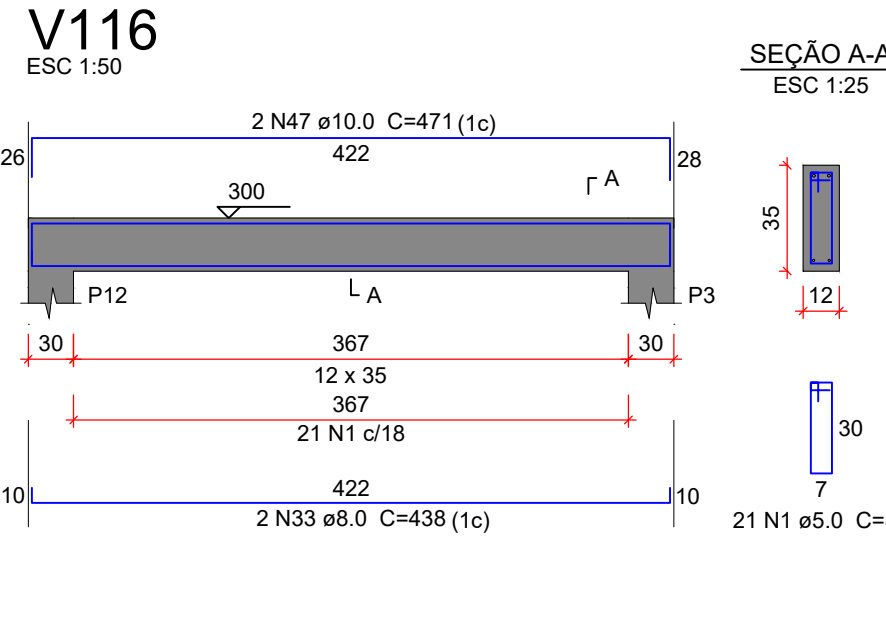
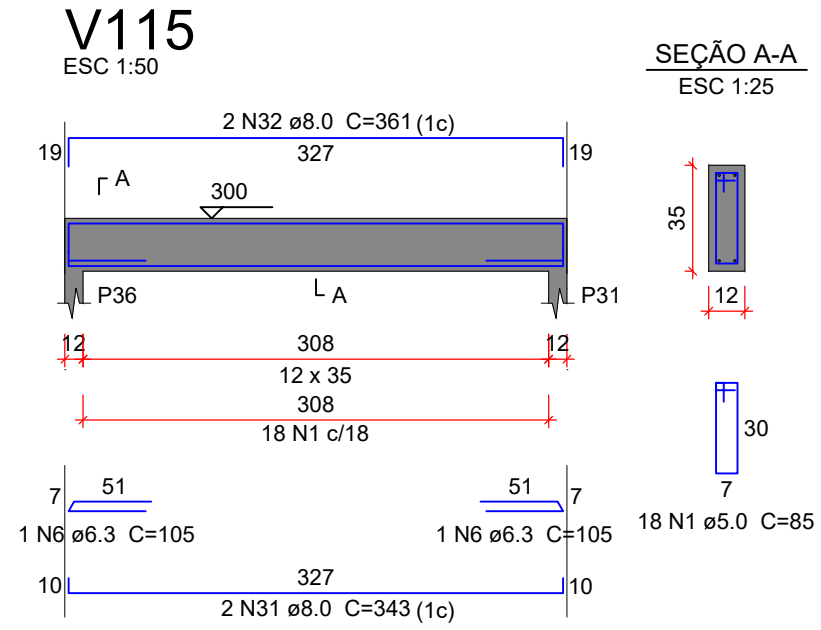
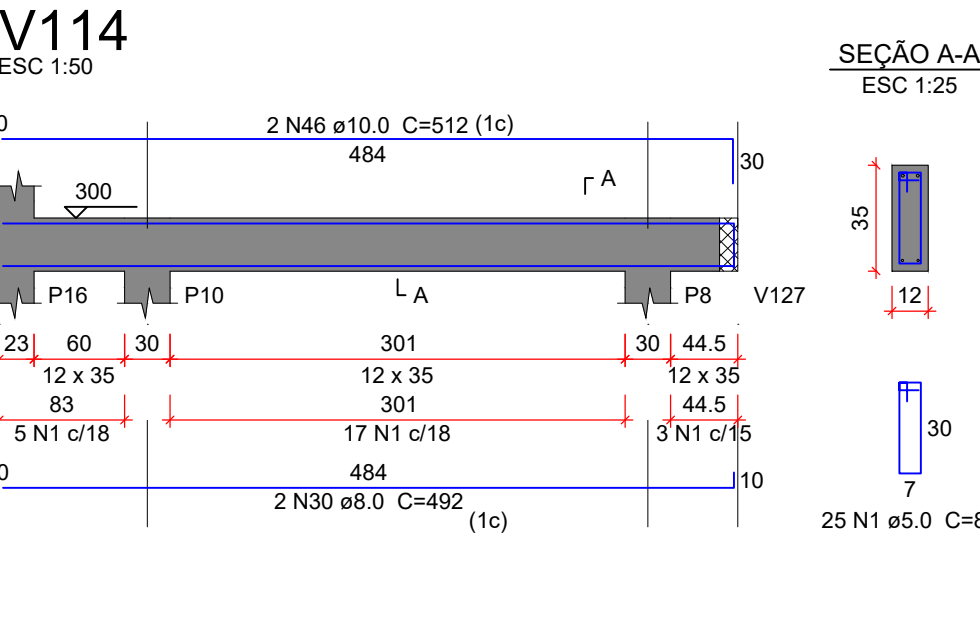
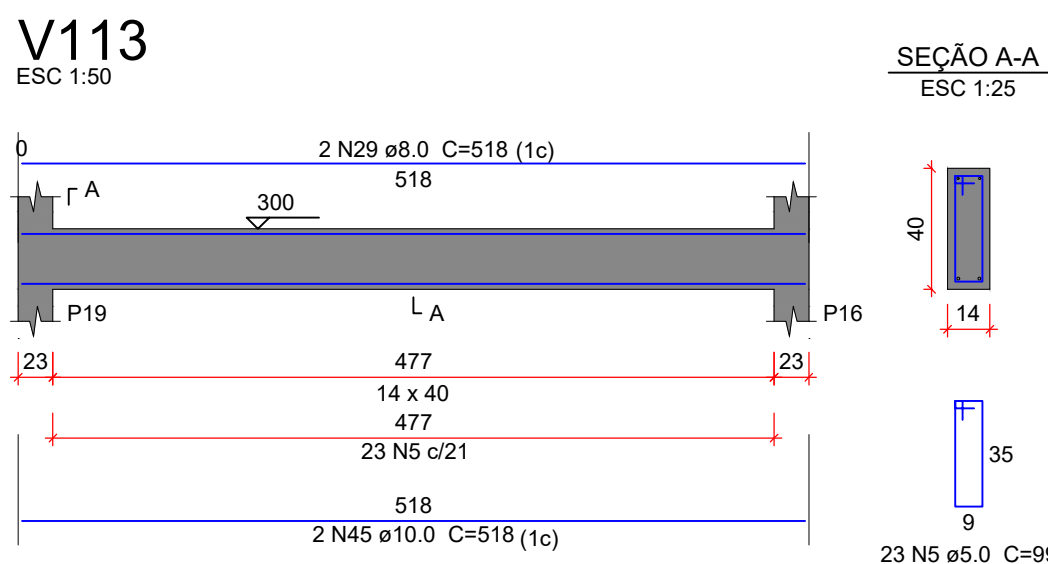
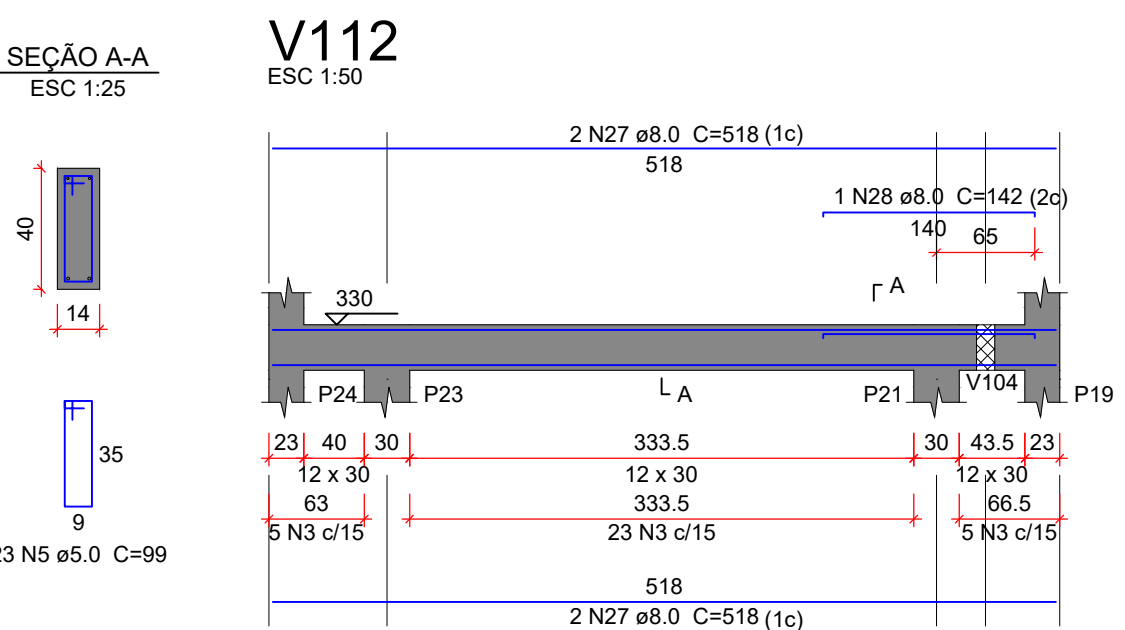
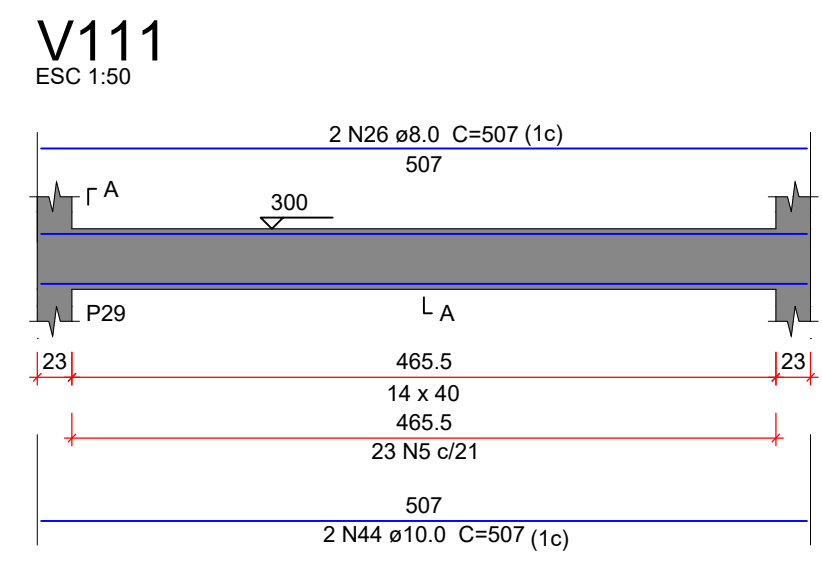
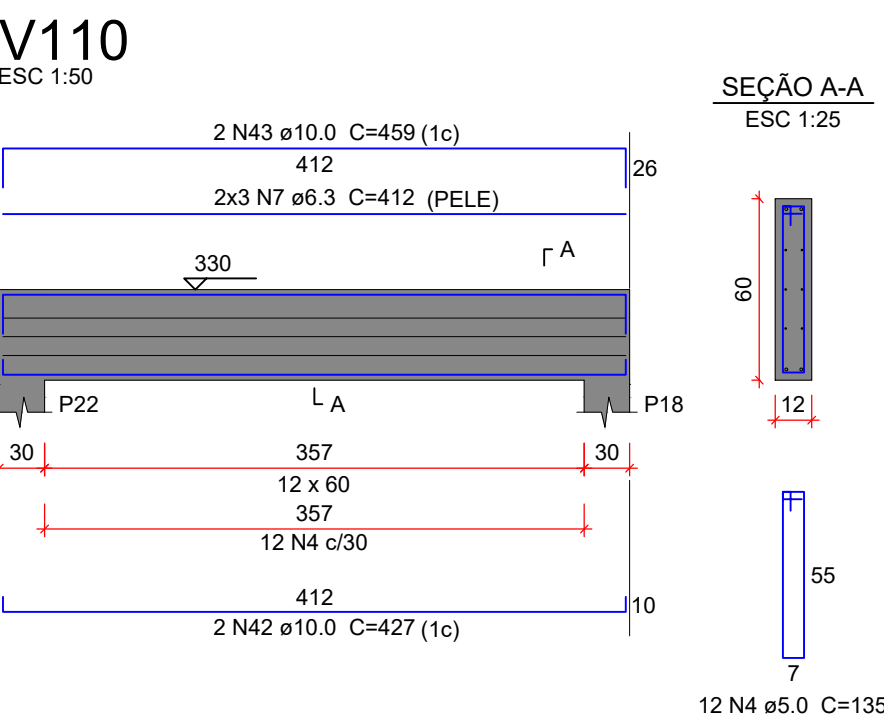
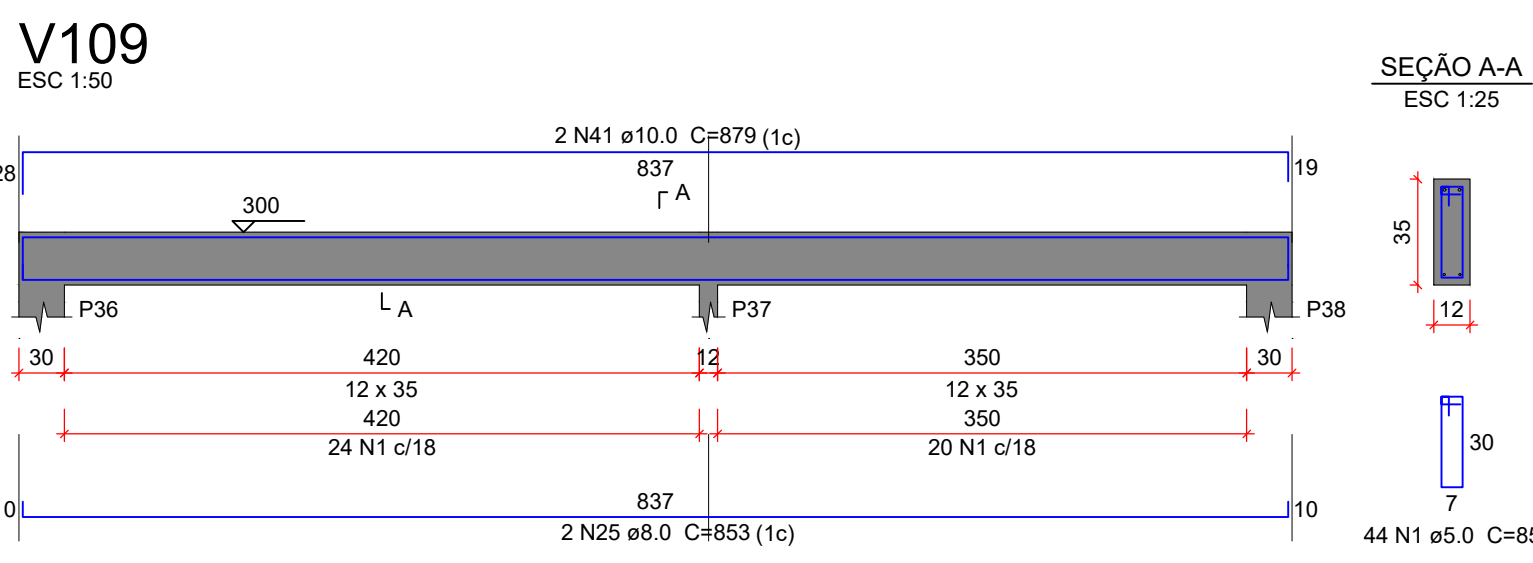
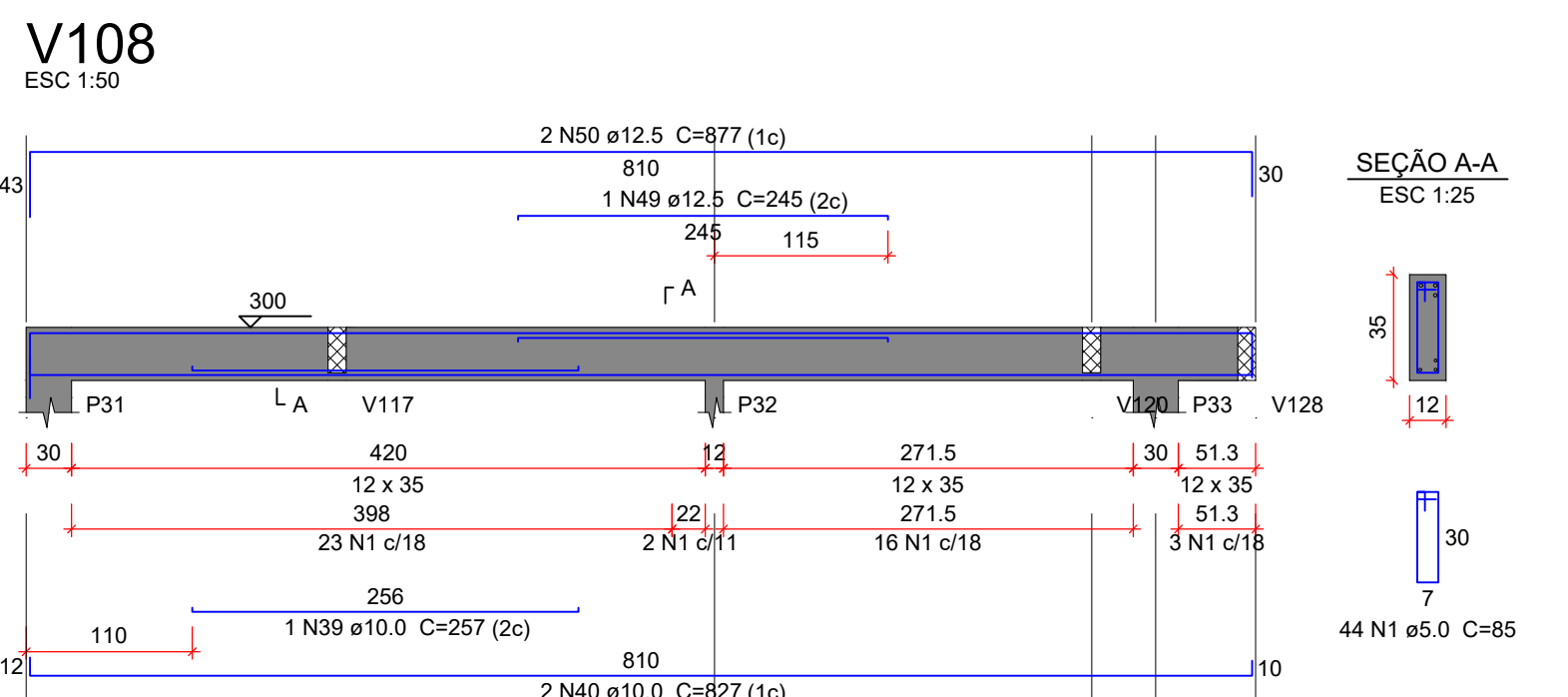
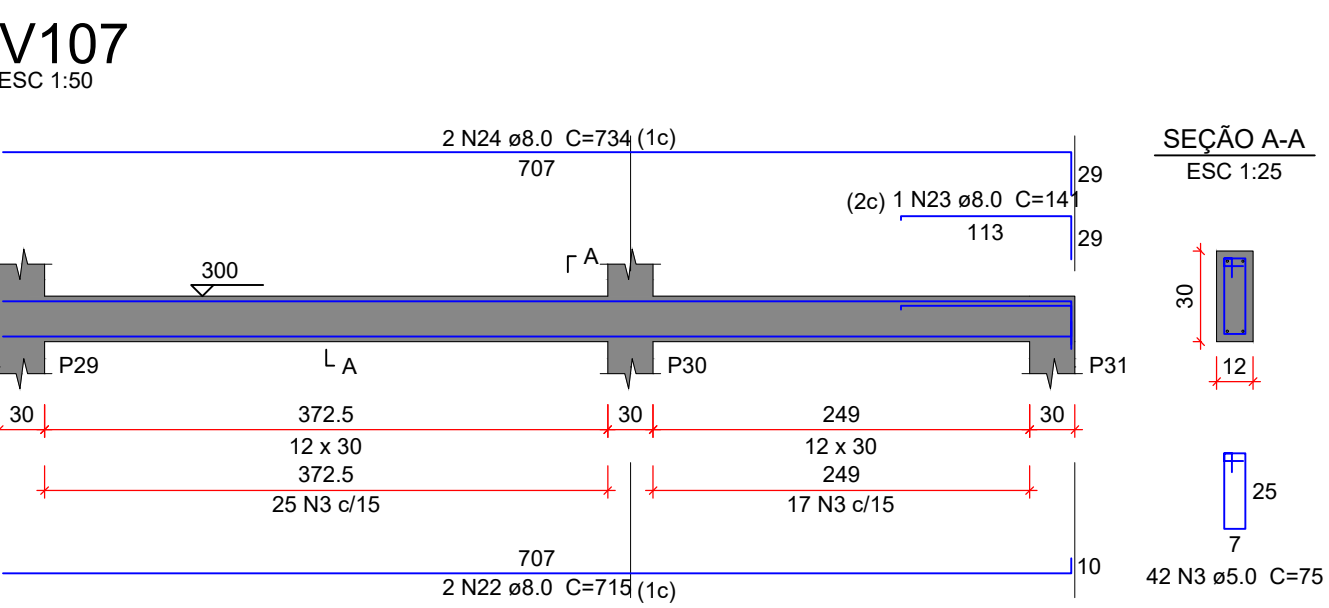
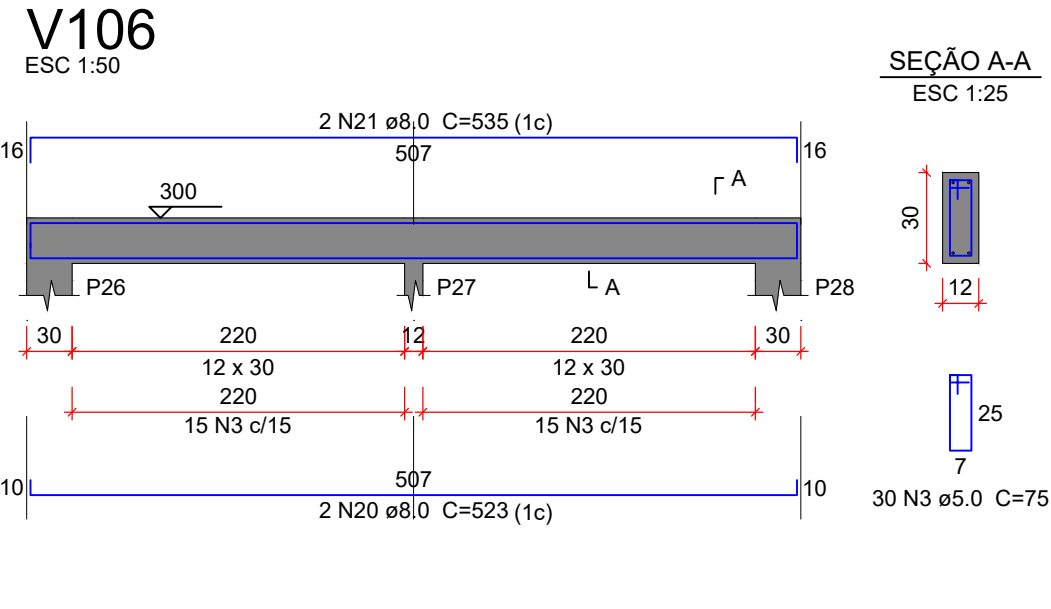
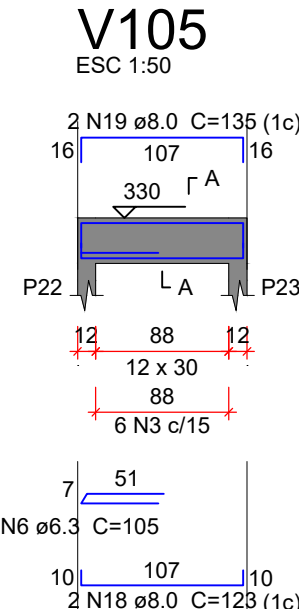
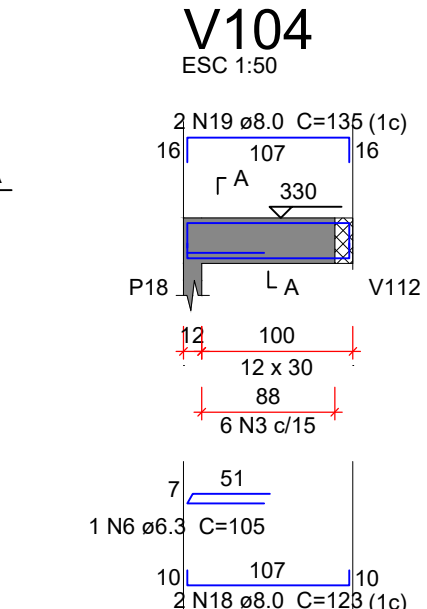
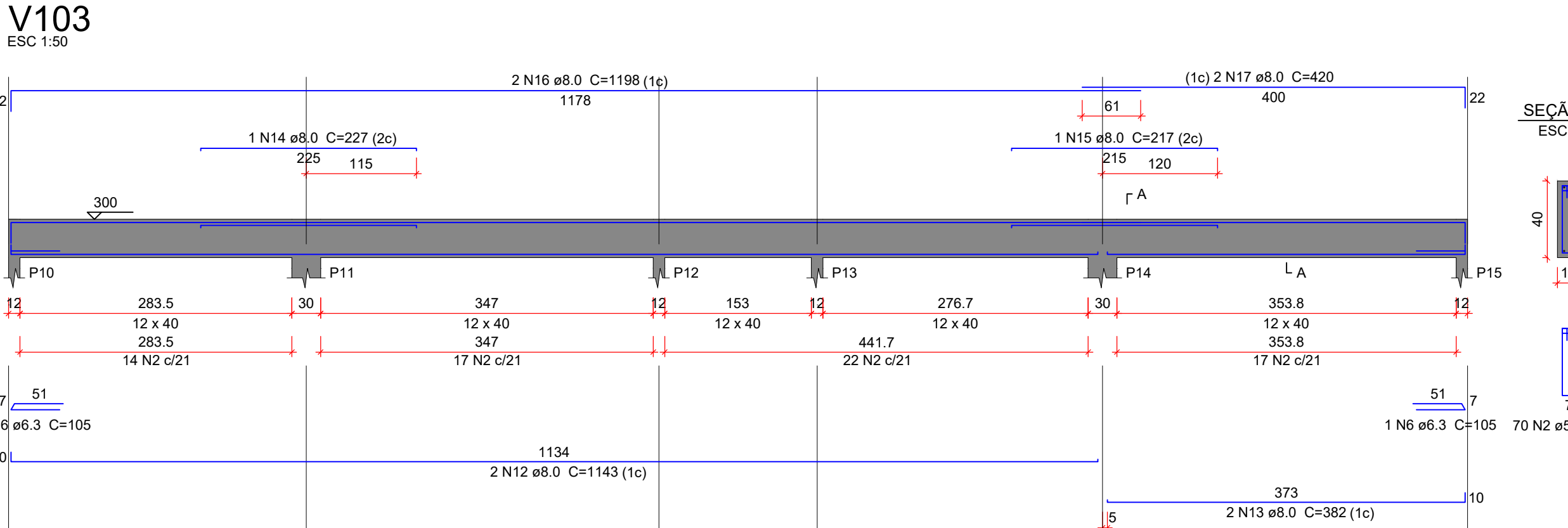
Resumo do aço

AÇO	DIAM (mm)	C.TOTAL (m)	PESO + 10 % (kg)
CA50	6.3	35.3	9.5
	8.0	259.6	112.6
	10.0	131.7	89.3
	12.5	20	21.2
CA60	5.0	417.5	70.8
PESO TOTAL (kg)			
CA50		232.6	
CA60		70.8	

Volume de concreto (C-25) = 3.75 m³
Área de forma = 62.43 m²

Relação do aço


AÇO	N	DIAM (mm)	QUANT	C.UNIT (cm)	C.TOTAL (cm)
V101					
V104					
V107					
V110					
V113					
V116					
V102					
V105					
V108					
V109					
V111					
V112					
V114					
V115					



ORGÃOS PÚBLICOS

PROJETO ESTRUTURAL

TIPO DE EMPREENDIMENTO	DATA
PÚBLICO	OUT/2025
CONTEÚDO	PRANCHA
VIGAS FORMA LAJE - PAV. +3.00m	06/07

 **PREFEITURA DO MUNICÍPIO DE MERCEDES**
DEPARTAMENTO DE ENGENHARIA
RUA DR. OSVALDO CRUZ, 555 CEP 85998-000 MERCEDES-PR FONE: (45) 3256-8045

PROJETO:	ENG. CIVIL CRISTIAN COMIN CREA: PR -214577 / D
EXECUÇÃO:	
PROPRIETÁRIO:	MUNICÍPIO DE MERCEDES CNPJ: 95.719.373/0001-23

OBRA: BARRAÇÃO PRÉ-MOLDADO - 240M2
LOCAL: ESTRADA VICINAL RURAL DA LINHA SANGA ALEGRE - LOTE RURAL 56/B - 38° PER.
- MERCEDES / PR
PROPRIETÁRIO: MUNICÍPIO DE MERCEDES